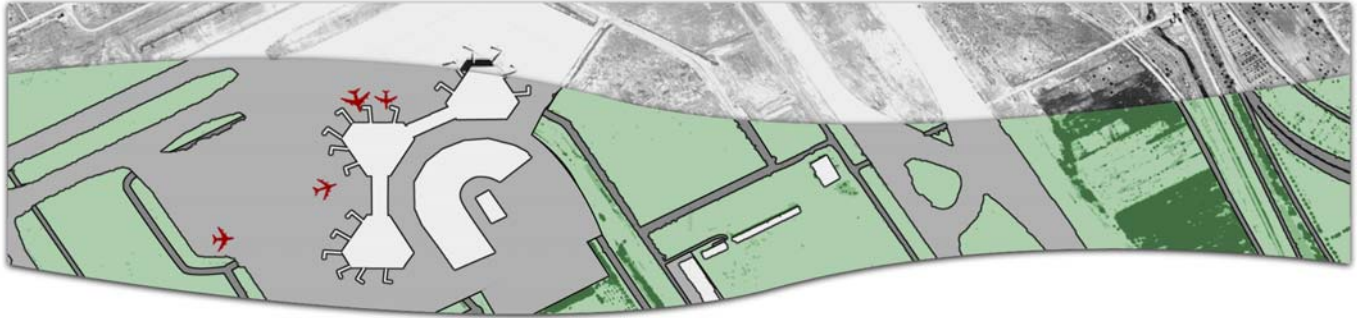


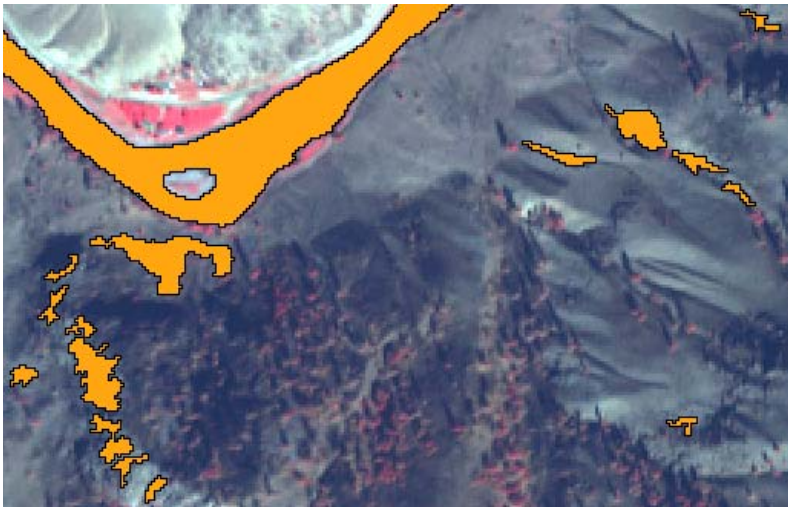
# Feature Analyst® QuickStart GUIDE



## 4.2 for ArcGIS

### AGGREGATION

The Aggregate Features option allows you to specify a minimum pixel area for polygon results. All holes within larger polygons and small isolated polygons are eliminated if they fail to meet the specified size requirement.



Example initial extraction feature results with a few scattered polygons outside the targeted river polygon

Aggregate Features is a quick way to reduce clutter, either after or instead of hierarchical learning.

---

## Visual Learning Systems, Inc.

*We put the Information in GIS*

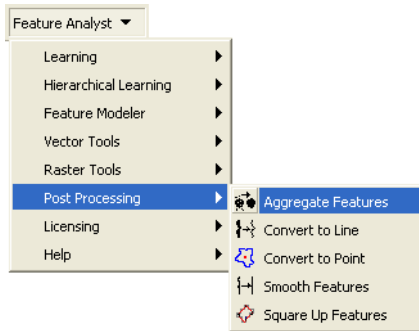


Copyright © 2001-2009 Visual Learning Systems, Inc. All Rights Reserved. THE INFORMATION CONTAINED HEREIN IS PROPRIETARY TO VISUAL LEARNING SYSTEMS, INC. AND SHALL NOT BE REPRODUCED, COPIED IN WHOLE OR IN PART, ADAPTED, MODIFIED, OR DISSEMINATED WITHOUT THE EXPRESS WRITTEN CONSENT OF VISUAL LEARNING SYSTEMS, INC. Feature Analyst® is a registered trademark of Visual Learning Systems, Inc. *We put the information in GIS* is a service mark of Visual Learning Systems, Inc. ESRI® and ArcMap® are registered trademarks and ArcGIS™ and Spatial Analyst™ are trademarks of Environmental Systems Research Institute, Inc. The names of other companies and products herein are trademarks or registered trademarks of their respective owners.

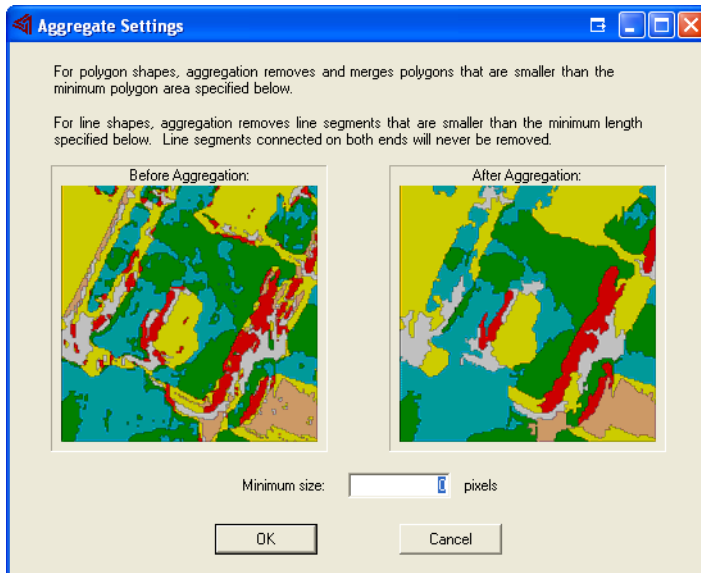
---

## Run Aggregation

- 1 Highlight the **results layer** in the table of contents.
- 2 Choose **Feature Analyst** on the toolbar, choose **Post Processing** on the drop-down menu, and then choose **Aggregate Features**.



The *Aggregate Settings dialog box* open.




---

**Tip:** Begin by entering a small number of pixels. Run a second aggregation pass with a larger number of pixels if necessary.

---

- 3 In the Minimum size field, enter **an aggregation pixel number**.

For additional information, review the parameter description below:

OPTION	FUNCTION
<b>Minimum size</b>	Removes any polygon with less than the specified number of connected pixels, and also fills any holes in polygons smaller than the specified number of connected pixels.

- 4 Choose **OK**.

*The Save Feature As dialog box opens.*

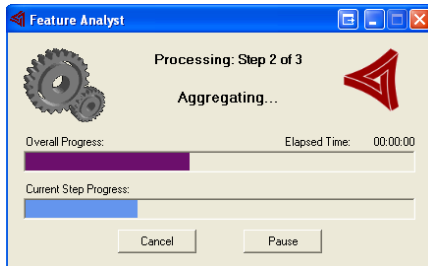
*By default, Feature Analyst names the file in the Name field using the last file name, the process (in this case Agg. for aggregate), and incremental numbering, as necessary.*

**5 Accept the default file name and file location.**

**-or-**

Provide a **new name** and **location** for the file and choose **Save**.

*The Feature Analyst Process box opens, displaying the progress of the aggregation.*



*Your aggregation layer appears in the table of contents and displays in the workspace.*



*Feature Analyst removes all polygons smaller than the minimum size entered and fills all holes in identified features smaller than the minimum size.*